

miditech Audioface II



***"Class Compliant" USB Audio Interface
(WinXP/Vista no drivers necessary)
16 Bit/ 48 kHz resolution line stereo interface plus
S/PDIF digital interface
Signal and peak indicator LEDs
Adjustable Stereo headphone output
Full duplex with compatible recording software
USB powered
Incl. Magix Samplitude SE***

***Typical applications:
Recording from
cassette, cd-players or mp3-players
Low latency playing of VST instruments***

eMail: info@miditech.de Internet: www.miditech.de

Operating Instructions

Thank you for deciding to purchase the Miditech Audioface II, we are certain you will be delighted with its performance and advanced features. Audioface II enables you to easily digitize all your analog sound sources from any LINE level devices, e.g. music cassette decks or CD players, etc. Not only does Audioface II offer a simple solution to digitizing analog sounds, it also gives you the very best HiFi audio quality. The included recording software Magix "Samplitude SE" offers you the capability to edit previously digitized music or speech. These operating instructions will give you some guidance on how to install and operate your Audioface II functions, also check the section on how to use the free bundled companion Magix program - "Samplitude SE".

Audioface II Technical data:

- Simple computer connection via USB
- "Class Compliant" device - NO driver installation necessary, runs directly under Windows 2000 SP4, Windows XP SP2, Windows Vista 32/64, Windows 7 32/64 and Mac OSX
- 16 Bit AD/DA Converters
- Sample rate 32.0 kHz, 44.1 kHz, 48.0 kHz
- Frequency response 10 Hz to 20 kHz, ± 1 dB @ 44.1 kHz sample rate - 10 Hz to 22 kHz, ± 1 dB @ 48.0 kHz sample rate
- THD 0.05 % typical. @ -10 dBV, 1kHz
- Crosstalk -77 dB @ 0 dBV, 1 kHz
- Signal-to-noise ratio A/D 89 dB typical. @ 1 kHz, A-weighted - D/A 96 dB typical. @ 1 kHz, A-weighted
- Adjustable stereo input for LINE level devices.
- Stereo output for LINE level devices.
- S/PDIF digital output (RCA).
- Adjustable stereo headphone output for headphones.
- USB Powered, i.e. power supplied via USB connection of the computer
- Indicator-LEDs for peak and signal
- Dynamic range: >86 dB (A)

Connection and operating devices:

The product case is printed with all relevant information!

At the front, there are 2 Phono (RCA) sockets and an adjustment switch for the input level next to them. Beside them there are also two light-emitting diodes, the signal (green) and an overdrive (red) LED. On the front of the Audioface II you also find the headphone output.

On the back side of the Audioface II you find 2 Phono (RCA) sockets for the analog output. Connect these LINE out sockets with a regular Phono (RCA) cable to an amplifier. If the amplifier has a coaxial S/PDIF input (RCA/Chinch), this connection can be also made digitally. Also there is the small wheel adjacent to the socket allows you to adjust the volume of the headphone out separately from the LINE outs and the S/PDIF out. All three outputs, the LINE out, S/PDIF out and the headphone out, all provide the same mix.

Connecting the Audioface II to your computer

Connecting the Audioface II to a computer is very easy! Simply connect your Audioface II, with the included USB cable, to a free USB port on your computer. When the Audioface II is attached the

green LED lights up briefly to signal a good power supply to the Audioface II. The installation under Windows will then take place automatically, a few seconds after connecting to your computer-system it will find a "USB Audio Codec" or "USB Audio Device", which can be used in each application and adjusted in the system control. Using the USB connection your digitized audio data can now be transferred to your computer! If you install our ASIO driver for the Audioface II, the interface will shown in a Windows system with it's right name.

LINE input

Connect your Player device to the two RCA sockets marked „LINE input“, the right channel is a red socket and the left channel is white. Now adjust the input-level with the little wheel next to the input sockets. You can connect any devices with a LINE level output, e.g. Tape deck or CD players.

Signal and peak indicator LEDs

The two LEDS indicate an incoming audio signal to the Audioface II. With a correct level the green signal LED lights up. The red peak LED only lights up when the signal level is too high, use the input level wheel to adjust the signal level down to just below peak

LINE Output (Stereo RCA Jacks)

Connect your amplifier to these analog outputs for monitor recordings or sounds from the computer.

S/PDIF Output (single RCA Jack)

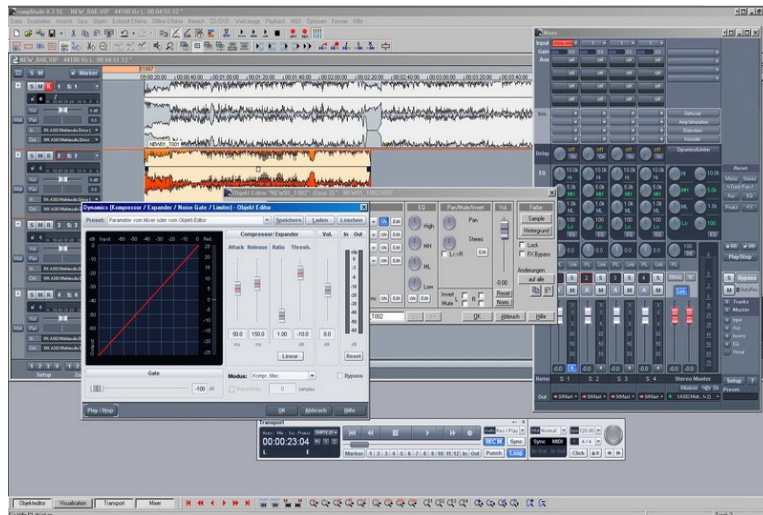
If your amplifier has a coaxial digital input, connect the S/PDIF output to the amplifiers digital input. This is the best possible connection method!

Headphone Output (Stereo Mini Jack 3,5 mm)

Connect your headphone to this output to monitor recordings or sounds from the computer.

References to the driver attitude under Windows audio sequencer programs such as Cubase, sonar or Samplitude:

The Audioface II runs under hard disk recording programs in the "Full Duplex Mode" (simultaneous admission and rendition) usually only with ASIO Multimedia drivers, the Windows WDM driver only permits one direction (admission or rendition) at the same time. We recommend that you download the Audioface II ASIO driver from our homepage www.miditech.de, or use the "ASIO for ALL" driver for the Audioface II under Windows. The ASIO driver makes it possible to use monitoring- and full duplex- modes. Additionally, the latency time of the audio signal will be substantially reduced.



Hard disk-recording software "Magix Samplitude SE"

The bundled software, which is shipped with the Audioface II, is special software for multiple hard disk recording, cutting and editing recorded music and speech.

Regarding the driver set-up in "Samplitude SE"

To set-up the drivers for Audioface II in "Samplitude SE", click the menus "options" and "system options" in the „audio set-up“. If you have installed an ASIO driver, you can adjust this here as a "record and play" device - please choose the driver for Audioface II. Below this the actual latency time will be displayed after selecting the driver, also, by clicking the button „Attitudes“ you can adjust the buffer size and the latency time of the driver itself. The latency time is system-dependent and is different in different personal computers. Choose a value as low as possible, if you adjust too low you hear interference noises, set the buffer and latency time of the driver just above the noise threshold.

We hope you get a lot of enjoyment from this exciting program! After installation and activation via www.magix.de this version is fully functioning.

Further information on extensions, updates and other products from Miditech please check out our homepage <http://www.miditech.de!>

*Changes of the technical data and the design are possible
No liability is assumed for misprints*