

Firmware upgrade instructions of the miniengine USB

Step 1: Tool list(MiniEngine USB + USB cables(A+A) + Windows OS)

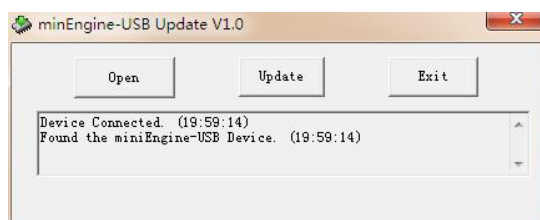


Step 2: Press and hold the PROGRAM + REVERB buttons, and power on. You will see the picture below.

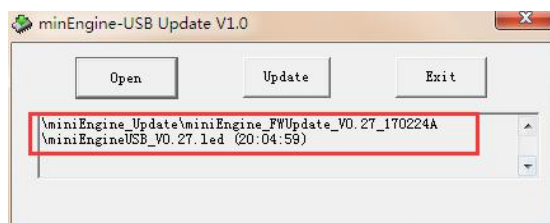


Step 3: Connect your Miniengine USB to your Windows PC via the USB cable.

Step 4: Run the upgrade tool below.



Step 5: You can add a new firmware by clicking the Open button.



Step 6: Click the Update button. Once the upgrade is completed, you will see the picture below.

